

KIT BARENATURA

1/04 - 30/06/2026



SORMA | IT
INDEXABLE TOOLS - NIKKO

**Selezione di utensili e inserti
per barenatura.
Ogni kit comprende 1 utensile
e 10 inserti.**

CARATTERISTICHE PRINCIPALI E VANTAGGI

Utensili premium in metallo duro



- Sporgenza fino a 7xD;
- Extra robusta, brasatura a forma di "V";
- Precisione più elevata e vita utensile migliorata.

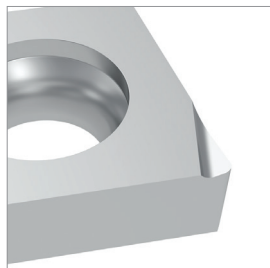
Utensili anti vibrazioni Vortex



- Evacuazione dei trucioli ottimizzata;
- Acciaio speciale anti-vibrazione fino a 5xD;
- Intera gamma con refrigerazione interna.

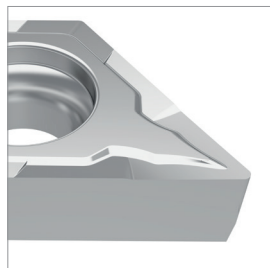
PPF (micro)

- Gole rettificate
- Taglio super dolce



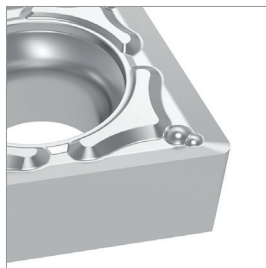
PPU (rettificato)

- Media asportazione
- Taglio continuo/interrotto



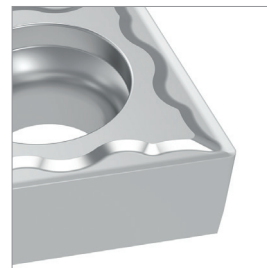
PFU (stampato)

- Taglio dolce








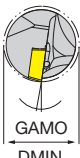


PMU (stampato)

- General purpose












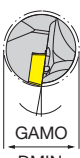


KIT BARENATURA MICRO

MCC+MD	 INTERNAL COOLANT 7xD	 GAMO DMIN	 Gole rettificate, superfinitura	
Codice KIT	1 pz. barra metallo duro	Dmin	10 pz. MCC.R__	Prezzo KIT
KIT-MCC-E01	NT-E04G-MICRO-CC-RH	5	MCC.R02L-PPF JP5125	€ 201,00
KIT-MCC-E02	NT-E04G-MICRO-CC-RH	5	MCC.R04L-PPF JP5125	€ 201,00
KIT-MCC-E03	NT-E05H-MICRO-CC-RH	6	MCC.R02L-PPF JP5125	€ 201,00
KIT-MCC-E04	NT-E05H-MICRO-CC-RH	6	MCC.R04L-PPF JP5125	€ 201,00




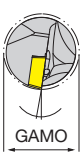
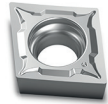

MCC+ Vortex	 INTERNAL COOLANT 5xD	 GAMO DMIN	 Gole rettificate, superfinitura	
Codice KIT	1 pz. barra Vortex	Dmin	10 pz. MCC.R__	Prezzo KIT
KIT-MCC-V01	NT-V10H-MICRO-CC-RH-05	5	MCC.R02L-PPF JP5125	€ 176,90
KIT-MCC-V02	NT-V10H-MICRO-CC-RH-05	5	MCC.R04L-PPF JP5125	€ 176,90
KIT-MCC-V03	NT-V10H-MICRO-CC-RH-06	6	MCC.R02L-PPF JP5125	€ 176,90
KIT-MCC-V04	NT-V10H-MICRO-CC-RH-06	6	MCC.R04L-PPF JP5125	€ 176,90





KIT BARENATURA


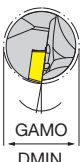


TB+ Vortex	  		 Gole rettificate, superfinitura		
	Codice KIT	1 pz. barra Vortex	Dmin	10 pz. MCC.R__	Prezzo KIT
	KIT-MTB-V01	NT-V10H-STLBR06-07	7	TBET060102L-PPF JP5125	€ 175,20
	KIT-MTB-V02	NT-V10H-STLBR06-07	7	TBET060104L-PPF JP5125	€ 175,20
	KIT-MTB-V03	NT-V10H-STLBR06-08	8	TBET060102L-PPF JP5125	€ 175,20
KIT-MTB-V04	NT-V10H-STLBR06-08	8	TBET060104L-PPF JP5125	€ 175,20	

WB+ Vortex	  		 Gole rettificate, superfinitura		
	Codice KIT	1 pz. barra Vortex	Dmin	10 pz. MCC.R__	Prezzo KIT
	KIT-MWB-V01	NT-V10H-SWUBR06-06	6	WBET060102L-PPF JP5125	€ 175,20
	KIT-MWB-V02	NT-V10H-SWUBR06-06	6	WBET060104L-PPF JP5125	€ 175,20
	KIT-MWB-V03	NT-V10H-SWUBR06-07	7	WBET060102L-PPF JP5125	€ 175,20
KIT-MWB-V04	NT-V10H-SWUBR06-07	7	WBET060104L-PPF JP5125	€ 175,20	

KIT BARENATURA GENERAL PURPOSE

CC06 + MD	  		 rettificato PPU - taglio continuo/interrotto		
	Codice KIT	1 pz barra metallo duro	Dmin	10 pz CC...060202-PPU	Prezzo KIT
	KIT-PPU-E01	NT-E08K-SCLCL06	10	CCGT060202-PPU JP5125	€ 196,50
	KIT-PPU-E02	NT-E08K-SCLCR06	10	CCGT060202-PPU JP5125	€ 196,50
	KIT-PPU-E03	NT-E10K-SCLCL06	12	CCGT060202-PPU JP5125	€ 206,80
	KIT-PPU-E04	NT-E10K-SCLCR06	12	CCGT060202-PPU JP5125	€ 206,80
	KIT-PPU-E05	NT-E12M-SCLCL06	14	CCGT060202-PPU JP5125	€ 224,10
	KIT-PPU-E06	NT-E12M-SCLCR06	14	CCGT060202-PPU JP5125	€ 224,10
		1 pz barra metallo duro		10 pz CC...060204-PPU	
	KIT-PPU-E07	NT-E08K-SCLCL06	10	CCGT060204-PPU JP5125	€ 196,50
	KIT-PPU-E08	NT-E08K-SCLCR06	10	CCGT060204-PPU JP5125	€ 196,50
	KIT-PPU-E09	NT-E10K-SCLCL06	12	CCGT060204-PPU JP5125	€ 206,80
	KIT-PPU-E10	NT-E10K-SCLCR06	12	CCGT060204-PPU JP5125	€ 206,80
KIT-PPU-E11	NT-E12M-SCLCL06	14	CCGT060204-PPU JP5125	€ 224,10	
KIT-PPU-E12	NT-E12M-SCLCR06	14	CCGT060204-PPU JP5125	€ 224,10	

			 stampato PFU - taglio dolce PMU - universale	
CC06 + VORTEX				
Codice KIT	1 pz barra Vortex	Dmin	10 pz CC...060204-PFU	Prezzo KIT
KIT-PFU-V01	NT-V08H-SCLCL06-10	10	CCMT060204-PFU JP5125	€ 117,00
KIT-PFU-V02	NT-V08H-SCLCR06-10	10	CCMT060204-PFU JP5125	€ 117,00
KIT-PFU-V03	NT-V10K-SCLCL06-12	12	CCMT060204-PFU JP5125	€ 120,70
KIT-PFU-V04	NT-V10K-SCLCR06-12	12	CCMT060204-PFU JP5125	€ 120,70
KIT-PFU-V05	NT-V12M-SCLCL06-14	14	CCMT060204-PFU JP5125	€ 132,10
KIT-PFU-V06	NT-V12M-SCLCR06-14	14	CCMT060204-PFU JP5125	€ 132,10
	1 pz barra Vortex		10 pz CC...060204-PMU	
KIT-PMU-V01	NT-V08H-SCLCL06-10	10	CCMT060204-PMU JP5125	€ 117,00
KIT-PMU-V02	NT-V08H-SCLCR06-10	10	CCMT060204-PMU JP5125	€ 117,00
KIT-PMU-V03	NT-V10K-SCLCL06-12	12	CCMT060204-PMU JP5125	€ 120,70
KIT-PMU-V04	NT-V10K-SCLCR06-12	12	CCMT060204-PMU JP5125	€ 120,70
KIT-PMU-V05	NT-V12M-SCLCL06-14	14	CCMT060204-PMU JP5125	€ 132,10
KIT-PMU-V06	NT-V12M-SCLCR06-14	14	CCMT060204-PMU JP5125	€ 132,10

			 stampato PFU - taglio dolce PMU - universale	
CC09 + VORTEX				
Codice KIT	1 pz barra Vortex	Dmin	10 pz CC...090204-PFU	Prezzo KIT
KIT-PFU-V07	NT-V12M-SCLCL09-14	14	CCMT09T304-PFU JP5125	€ 137,20
KIT-PFU-V08	NT-V12M-SCLCR09-14	14	CCMT09T304-PFU JP5125	€ 137,20
KIT-PFU-V09	NT-V16Q-SCLCL09-18	18	CCMT09T304-PFU JP5125	€ 155,70
KIT-PFU-V10	NT-V16Q-SCLCR09-18	18	CCMT09T304-PFU JP5125	€ 155,70
	1 pz barra Vortex		10 pz CC...090204-PMU	
KIT-PMU-V07	NT-V12M-SCLCL09-14	14	CCMT09T304-PMU JP5125	€ 137,20
KIT-PMU-V08	NT-V12M-SCLCR09-14	14	CCMT09T304-PMU JP5125	€ 137,20
KIT-PMU-V09	NT-V16Q-SCLCL09-18	18	CCMT09T304-PMU JP5125	€ 155,70
KIT-PMU-V10	NT-V16Q-SCLCR09-18	18	CCMT09T304-PMU JP5125	€ 155,70